

# OPTIONAL ACCESSORIES

## Digital Camera Adapters



**Z1018**  
Adapter for  
compact cameras



**DG**  
Adapter for  
SLR cameras  
(requires camera-  
specific T-mount  
adapter)

DG

### T-Mount Adapters

**T-NIKON**  
**T-PENTAX/K**  
**T-SONY**  
**T-CANON/EOS**

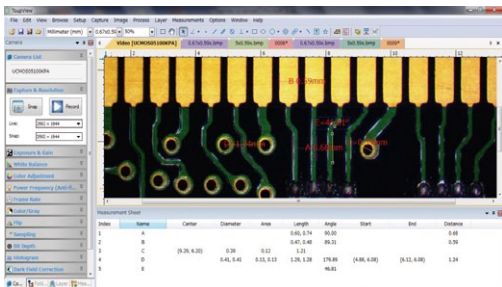


## USB/Digital Cameras

The **VD-PC5** and the **HDCE-X5** cameras with Image processing and measurement software which can easily convert a conventional microscope into "Digital Microscope" capable of processing, measuring and saving images.



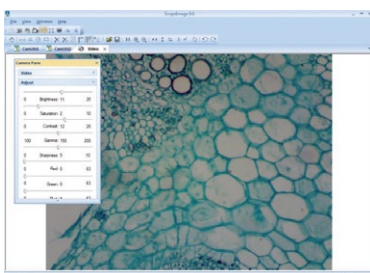
VD-PC5 Package



Model	VD-PC5 (code: UCMOS05100KPA)
Image Sensor	1/2.5" CMOS
Resolution / Max Frame Rate	2592x1944 5 fps
	1280x960 18 fps
	640x480 60 fps
Exposure	Auto/Manual
White Balance	Auto/Manual
Mount Type	C mount, 23.2mm dia. relay lens & 30mm dia. and 30.5mm dia. eyepiece sleeve adapters
Interface	USB2.0
Application	"ToupView" Video/Image Processing & Measurement Software
Measurement Tools	Angle, Point, Line, Parallel, Two Parallels, Vertical, Rectangle, RoundRect, Ellipse, Circle, Annulus, Two Circles, Arc, Polygon
OS	Windows XP / Vista / 7 / 8 (32 & 64 bit), Mac OS X, Linux



HDCE-X5



Model	HDCE-X5
Image Sensor	1/2.5" CMOS
Resolution / Max Frame Rate	2592~1944 2.5 fps
	1024~768 10 fps
Exposure	Auto/Manual
White Balance	Auto/Manual
Mount Type	C mount with 23.2mm dia. relay lens & 30mm dia. eyepiece sleeve adapter
Interface	USB2.0
Application	"ScopImage9.0" Image Process & Measurement Software
Measurement Tools	Line, Angle, Circle, Rectangle, Polygon
OS	Windows 2000/XP/Vista/Win 7 32bit or 64bit